

# Present Pathways to Growth of Research Performance-Current Portrait and Progress of Research Performance in NIDA

Erasmus+ Capacity Building in Higher Education

The Mapping Study Workshop, 7th – 9th of August, 2017, Kuala Lumpur

Assessing and Improving Research Performance at South East Asian Universities

*Sid Suntrayuth & Chih-Cheng Fang*

*ICO NIDA*



Co-funded by the  
Erasmus+ Programme  
of the European Union

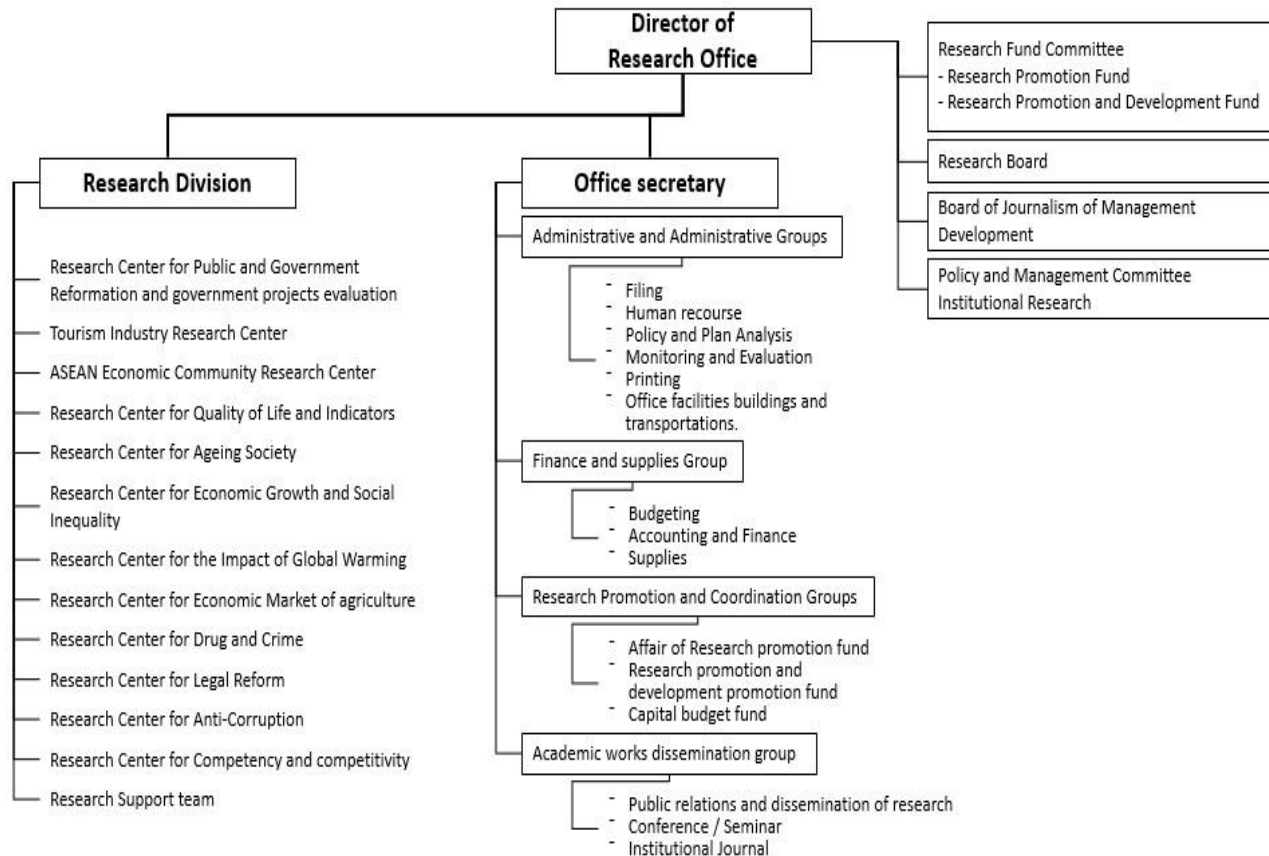
This project has been funded with support from the European Commission.  
This publication [communication] reflects the views only of the author, and  
the Commission cannot be held responsible for any use which may be  
made of the information contained therein



# Content

- Structure of Funding ICO NIDA
- Research Input and Output
- Institutional Management

# 4.1 Structure and Function of NIDA Research Office



## 4.2 Research input and output:

- NIDA has providing guide lines of performing research project for the members within the institute. Which provide to the procedures for different research types, such as:
  - **Educational** research or a **holistic** research.
  - Research in **textbook writing** and **instructional media**.
  - Research that have **high policy impact**.
  - Research for **case study**
  - Research in **science** for the purpose for Capital Budgeting
  - Research Technologic **Patent** and **sub-patent**
  - **Post-Doctoral Fellowship**

## 4.2 Research input and output:

- The topics focused are:
  - Tourism Industry
  - ASEAN Economic Community
  - Quality of Life and Indicators
  - Ageing Society
  - Economic Growth and Social Inequality
  - Impact of Global Warming
  - Economic Market of agriculture
  - Drug and Crime
  - Legal Reform
  - Anti-Corruption
  - Competency and competitiveness



## 4.2 Research input and output:

- NIDA's a research center has been organized and is aiming for following activities regarding research.
  - Research plans in accordance with institutional requirements of government and society.
  - Coordinating and supporting research by funding research promotion.
  - Providing research support services to other faculties and departments.
  - Responsible for institutional research for the institution and/or on a direction basis.
  - Conduct research on research projects of institutions receiving budget and get a budget from other sources.
  - Provide funding and other resources to promote research more widely.
  - Provide regular project researchers.
  - Processing of documents and research results of the institution
  - Organize seminars and workshops on research
  - Perform other tasks as assigned by the institution

## 4.2 Research input and output: The Funds

- The research grants or awards are provided base on research types. In NIDA there are three research funds:
  - 1) Research Promotion Fund
  - 2) Research Development Promotion and
  - 3) Capital budget.
- For faculties and staffs of the institute who want to perform a research with following categories.
- Two Research Promotion Funds:
  - Scholarship Award for Research in Academic Writing
  - Scholarships for study or research in complete research (personnel Support line)

## 4.2 Research input and output: The Funds

### 12 Research Promotion and Development Funds:

1. A research funding award for educational research or a holistic research.
2. A research funding award for study or research in textbook writing and instructional media.
3. Research grants in research that have high policy impact.
4. Research grant are awarded for completed research that is published in ISI listed journals' database.
5. Research fund for case study
6. Research grants for research articles submit for publishing consideration in International journals
7. Research Awards published in international journals.
8. Research Awards for research for publication in International journals
9. Research Awards for research in science for the purpose for Capital Budgeting Research Grant proposal
10. Research fund that associated to the Capital Budgeting Research Scheme
11. Research Award in Technologic Patent and sub-patent
12. Post-Doctoral Fellowship



item	Research type	Fund (in Baht per case)	
1.	A research funding award for educational research or a holistic research	500,000	
2.	A research funding award for study or research in textbook writing and instructional media	250,000	
3.	Research grants in research that have high policy impact.	Compensation bases on personnel of the project Lecturer 50,000 - 60,000/man-month Assistant Professor 60,000-70,000/man-month Associate Professor 80,000-90,000/man-month	Professor 100,000/man-month Research Assistant 10,000 - 18,000 Baht The specialized consultant is designated as man/month.
4.	Research grant are awarded for completed research that is published in ISI listed journals' database	200,000	
5.	Research fund for case study	In Thai version, no more than 120,000 (+20,000 translated into English) project time 6 months In English version, no more than 180,000 (+20,000 receiving Thai teaching note) project time 6 months	
6.	Research grants for research articles submit for publishing consideration in International journals	10,000 per case	
7.	Research Awards published in international journals	For ISI 30,000~250,000 For SCimago 20,000~200,000	
8.	Research Grants for research for publication in International journals	Translation from Thai to English 20,000 English editing Baht10,000 on actual payment amount	
9.	Research grant for research in science for the purpose for Capital Budgeting Research Grant proposal	10,000 per case	
10.	Research fund that associated to the Capital Budgeting Research Scheme	60,000 per case	
11.	Research Award in Technologic Patent and sub-patent	Patent100,000 Sub-patent 60,000	
12.	Post-Doctoral Fellowship	For Thai Monthly salary 10,000 for 12 months Submit Inception Report: 50,000 Submit Progress Report 50,000 Published in an international journal that is in ISI database: - 2 articles 220,000 and one article 110,000	For Foreigner Monthly salary 10,000 for 12 months Submit Inception Report: 50,000 Submit Progress Report 50,000 Published in an international journal that is in ISI database: - 2 articles 160,000 and one article 80,000 Travelling expenditure for air ticket of scholar activity is limited in economic flight fare but no more than 30,000

## 4.3 Institutional Management: NIDA's research office

### **Vision of Research Office**

*“To excel in research and dissemination of research at national level and regional”*

### **Philosophy of Operations Research Office**

*Operate by focusing on quality, efficiency, effectiveness and adherence to morality and ethics of research. Thus, to maintain continuous self-developing research leadership*

## 4.3 Institutional Management:

- NIDA's **research office** supports the researching activities within the institute has **six main missions**:
  - Production of research results in the field of development.
  - Coordination, promotion and support of internal and external research
  - Academic services, disseminating information, research results and academic work
  - Organizing the academic journals of the institute; internal journals
  - Being the Secretariat of the Research Council of the Institute's Research Fund.
  - Perform mission-based policy assignments related to research.

## 4.3 Institutional Management:

- Strategic concept of the Research Office.
  - Strategic research services **for society**.
  - Strategic research **for Human Resources Development and Service Development**
  - **Collaborative research strategies** with both internal and external research organizations both in and outside of the country

# The outputs: The Journals

<b>Journal of Development Economics</b>	<b>NIDA Development Journal</b>
NIDA Economic Review	NIDA Business Journal
Journal of Social Development	NIDA Case Research Journal
Thai Journal of Public Administration	NIDA Independent Study Journal
NIDA Journal of Language and Communication	NITIPAT NIDA Journal
Journal of Environmental Management	Journal of Communication and Innovation NIDA
Journal of Public and Private Management	Journal of International and Thai Tourism
Journal of Human Resources Development and Organization	



Thank you for your attention!



Co-funded by the  
Erasmus+ Programme  
of the European Union